



## North Surrey Numeracy and Literacy Assessment Information 2020

- All Grade 10 Students **MUST WRITE BOTH** the provincial Numeracy 10 and Literacy 10 Assessments. **Grade 10s will write these exams during the quarter when they have their English 10 or Math 10 courses.**
- **Grade 11 students MUST WRITE** the provincial Numeracy 10 and Literacy 10 Assessment, if they have not already done so. This will be written in **January**.
- **Grade 12 students MUST WRITE** the provincial Numeracy 10 Assessment, if they have not already done so. This will be written in **November**.

### Exam Schedule (SEE ATTACHED SCHEDULE)

#### NOVEMBER:

Numeracy Assessment: **Grade 12 students** who have not yet written will be divided into 4 small groups, divided alphabetically by student last name, so physical distance in computer labs can be maintained. Students will be excused from their regularly scheduled classes

Numeracy and Literacy Assessments for **all Grade 10 students** who are currently enrolled in a Math 10 or English 10 class. Computer labs with appropriate physical distancing and mask for non-cohort groups.

#### JANUARY:

Exams will be held during Completion Days so no regularly-scheduled classes will be taking place.

Numeracy and Literacy Assessment: **Grade 11 students** who have not yet written will be divided into small groups so physical distance in computer labs can be maintained.

Numeracy and Literacy Assessments for **all Grade 10 students** who are currently enrolled in a Math 10 or English 10 class. Computer labs with appropriate physical distancing and mask for non-cohort groups.

#### APRIL:

Exams will be held during Completion Days so no regularly-scheduled classes will be taking place.

Numeracy and Literacy Assessments for **all Grade 10 students** who are currently enrolled in a Math 10 or English 10 class. Computer labs with appropriate physical distancing and mask for non-cohort groups.

#### JUNE:

Exams will be held during Completion Days so no regularly-scheduled classes will be taking place.

Numeracy and Literacy Assessments for **all Grade 10 students** who are currently enrolled in a Math 10 or English 10 class. Computer labs with appropriate physical distancing and mask for non-cohort groups.

**ANY REMAINING** students not yet having written exams will also be scheduled

# Assessment Information:

## GRADUATION NUMERACY ASSESSMENT

### Why is there a new Graduation Numeracy Assessment?

Students face high demands in today's complex world and have more opportunities and challenges than ever. Universities, colleges and employers tell us they are looking for a new type of graduate—one with strong critical-thinking and problem-solving skills. It is our job to equip BC students to compete on a global scale, so our curriculum is being modernized and our assessments are being updated to align with the new curriculum. The Numeracy Assessment is a key part of this new framework.



Past exams were a one-size-fits-all approach, with largely multiple-choice formats assessing a student's knowledge based on content and facts.

The new Graduation Numeracy Assessment has a more interactive and engaging format. It assesses understanding, application of knowledge and deeper learning, and has students apply mathematical reasoning learned throughout their education.

### What is "numeracy"?

Just as we must enable students to become literate, we must also enable them to become numerate. For the purpose of the Numeracy Assessment, numeracy is defined as the ability, willingness, and perseverance to interpret and apply mathematical understanding to solve problems in contextualized situations, and to analyze and communicate these solutions in ways relevant to the given context.

### What does the Graduation Numeracy Assessment look like?

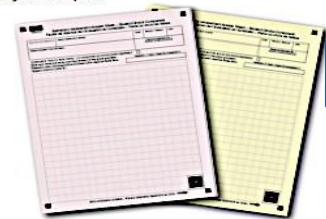
The assessment is based on mathematical concepts learned across multiple subjects from kindergarten to Grade 10, with an emphasis on K-9. Students will encounter questions prompting them to use the five numeracy processes: Interpret, Apply, Solve, Analyze, and Communicate. They will also encounter student-choice components. These are deeper questions that will require students to provide detailed explanations to justify their thinking and present their mathematical solutions in context.

The assessment itself is delivered online and has three essential components:

**Common component:** 24 questions answered online by all students

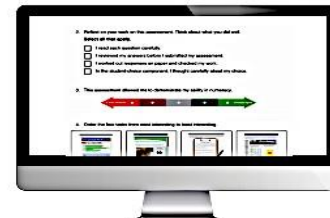


**Student-choice component:** 2 long-response questions answered on paper. These questions stem out of the information and work the student will have completed in the common component. Students get to pick 2 of 4 possible questions, based on their interest, and take their analysis deeper.



**Self-reflection component:** answered online (not marked)

There are also pre-assessment activities for students to explore ahead of time and activate their thinking, such as the sample assessment and the collaborative-learning videos explaining the five numeracy processes.



## Quick Facts

- The Numeracy Assessment is a new provincial assessment and a graduation requirement for students on the 2018 Graduation Program (all students except for this year's Grade 12s).
- Students will write the assessment during their graduation years (Grades 10–12) at the most appropriate time for them. The assessment sessions start in January 2018.
- Unlike the retired Mathematics 10 Provincial Exams, the Numeracy Assessment is not tied to a specific math course. Rather, it evaluates a student's numeracy skills developed over the course of their education.
- Results will be reported using a four-category proficiency scale and will appear on a student's transcript as a number, representing one of the four categories (emerging-developing-proficient-extending).
- Students will have two opportunities to rewrite during their graduation years should they wish to increase their proficiency. Results will appear on **Student Transcripts** and their best outcome will be recorded on their final transcript.
- The Numeracy Assessment typically requires two hours to complete; however, students may use a third hour if they require the extra time.

## What do the proficiency scale categories look like?

Proficiency Scale	→			
	Emerging	Developing	Proficient	Extending
	The student demonstrates an initial understanding of the concepts and competencies relevant to the expected learning.	The student demonstrates a partial understanding of the concepts and competencies relevant to the expected learning.	The student demonstrates a complete understanding of the concepts and competencies relevant to the expected learning.	The student demonstrates a sophisticated understanding of the concepts and competencies relevant to the expected learning.

## Will results affect entrance into post-secondary institutions?

It is possible post-secondary institutions may use results as value-added information when determining admission requirements. Institutions are currently in the process of reviewing their admission processes to align with changes to the K–12 education system.

Employers may also be interested in a student's assessment results, as evidence of their achievement in numeracy.

More questions?  
Try the **Curriculum website** for more information on the **Graduation Numeracy Assessment**, including a **sample assessment** and **collaborative-learning videos**.

## The Grade 10 Graduation Literacy Assessment

The Grade 10 Graduation Literacy Assessment (GLA 10) assesses students' ability to use critical thinking and analysis to make meaning from diverse examples of text. It also assesses the ability of students to communicate their ideas.

The GLA 10 is delivered online and has three parts:

- **Part A** (all students complete this part): Students will read several different types of texts (eg. Blogs, infographics, newspaper or magazine articles, social media feeds, and stories). Students will demonstrate that they can analyze and make meaning from the texts by answering a series of selected-response questions. They will then provide written responses to communicate their understanding.
- **Part B** (students choose one or two options): After choosing one option students will read a new set of texts. Again they will demonstrate they can analyze and make meaning of the texts by answering selected-response questions. They will then provide written responses to communicate personal connections.
- **Self-reflection component:** These questions ask students to reflect on their experience with the assessment. This component is not marked.

The Grade 10 Graduation Literacy Assessment results will be reported on students' transcripts with a "requirement met" indicator only

[Check out a sample here!](#)

## FAQs

### How do I prepare?

Talk to your current or last-semester teacher, talk to your counsellor or vice principal and go to the Ministry Website for detailed information, including: Pre-assessment Activities, Videos, and Online Sample Exams

The Numeracy Assessment information can be found here:

<https://curriculum.gov.bc.ca/assessment/grade-10-numeracy-assessment>

The Literacy Assessment information can be found here:

<https://curriculum.gov.bc.ca/assessment/literacy-assessment/grade-10-literacy-assessment>

### Will the results be included on my transcript?

Yes. The Numeracy Assessment will use a four-point proficiency scale (see below) and the Literacy Assessment will only indicate Requirement Met, if completed. Both assessments are also a requirement of graduation.



## NORTH SURREY EXAM SCHEDULE:

DATES	TIME	CLASS WRITING	EXAM	LAB
Monday, Nov. 2	12:10 - 3:10 pm	Gr. 12's Group 1 LAST NAME: A-F	Numeracy 10	210
	12:10 - 3:10 pm	Gr. 12's Group 2 LAST NAME: G-M	Numeracy 10	211
	12:10 - 3:10 pm	Gr. 12's Group 3 LAST NAME: N-P	Numeracy 10	217
	12:10 - 3:10 pm	Gr. 12's Group 4 LAST NAME: Q-Z	Numeracy 10	501
Tuesday, Nov. 3	8:30 - 11:30am	A Ma10 OHMS	Numeracy 10	210
	12:10 - 3:10 pm	B CW10 SVELANDER	Literacy 10	217
	12:10 - 3:10 pm	B Lit 10 BALLARD group 1 Last Name: B-N	Literacy 10	210
	12:10 - 3:10 pm	B Lit 10 BALLARD group 2 Last Name: P-Z	Literacy 10	501
Wednesday, Nov 4	12:10 - 3:10 pm	B Lit 10 OKE group 1 Last Name: A-P	Literacy 10	217
	12:10 - 3:10 pm	B Lit 10 OKE group 2 Last Name: R-Z	Literacy 10	211
	12:10 - 3:10 pm	B Math 10 FURTADO group 1 Last Name: A-H	Numeracy 10	210
	12:10 - 3:10 pm	B Math 10 FURTADO group 2 Last Name: K-Z	Numeracy 10	216
Thursday, Nov. 5	12:10 - 3:10 pm	B Math 10 BEGG	Numeracy 10	211

## Reminders for Students:

- Please read the room assignments to make sure you go to the correct room. You are divided by last name and/or by class.
- Bring your student **GO CARD**
- Bring pens and pencils and a good eraser.
- Large bags, textbooks or binders and cell phones will be stored at the front of exam rooms.
- All exams are intended to take 2 hours to complete – however students are allowed an additional 60 minutes if needed.
- Bathroom breaks are for an emergency only—you will be escorted to a STAFF washroom, and must show that your pockets are empty before going in. **GO TO THE WASHROOM PRIOR TO THE EXAM!**
- Make sure you keep your eyes on your own paper and no talking once you enter the exam room.
- Follow all instructions given to you by exam supervisors.
- When you leave the exam room, leave all examination materials on your desk.
- Once you leave, you will NOT be permitted to return.