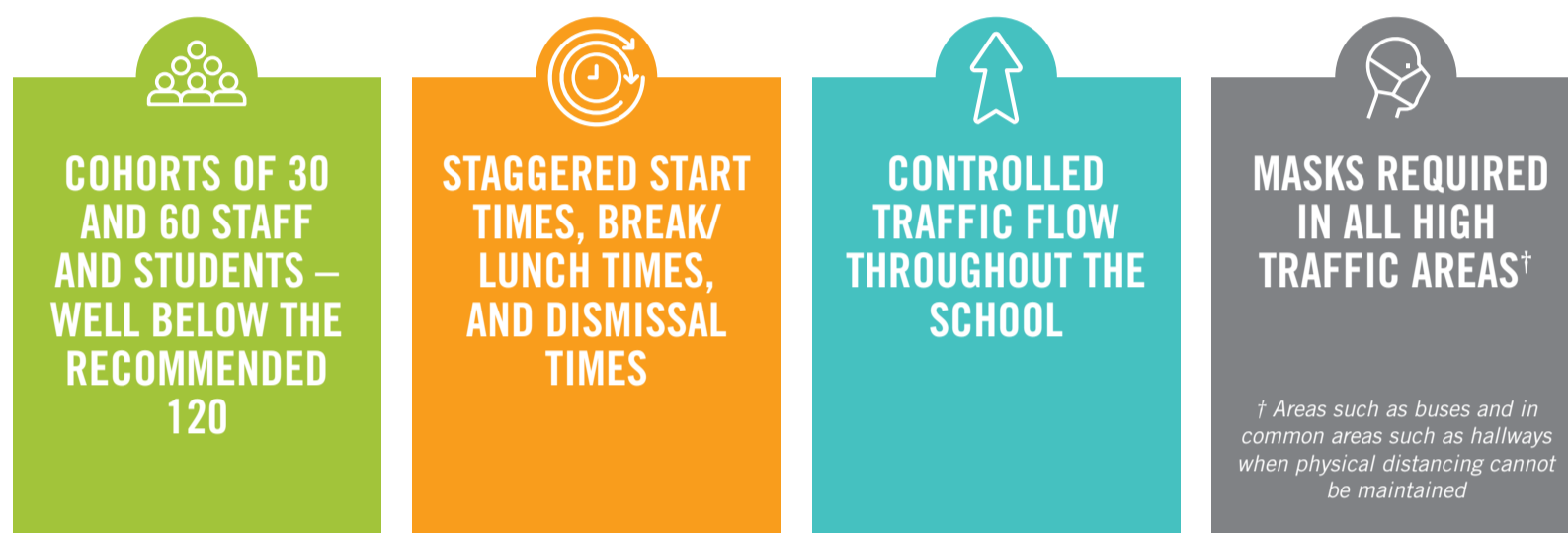


PLANS FOR SECONDARY SCHOOLS

The district has over 28,000 students in 20 secondary schools, 15 of which have more than 1300 students and the largest has just under 2000 students.

The district's plans outline how schools will reduce the number of in-person, close interactions students and staff will have in a day through set cohorts/learning groups and physical distancing. Key components include:



THE NEW MODEL

JUNIOR PROGRAM STUDENTS (GRADE 8, 9)

- Students will be arranged in cohorts* of approximately 60 students and staff combined.
- Students will have 2 face-to-face classes each quarter (for a total of 8 classes in the school year).
- Start times, break/lunch times, and dismissal times will be staggered from graduate program at some sites.

GRADUATE PROGRAM STUDENTS (GRADE 10, 11, 12)

- Students will be arranged in cohorts* of approximately 30 students and staff combined.
- Students will have 2 classes each quarter (for a total of 8 classes in the school year).
- Students will be on a blended program with one in person class and one online class where small groups of students will attend in person one day a week.
- There will be time built into the blended program schedule to allow teachers time to prepare, deliver and support the blended program.

ADVANTAGES OF THE NEW MODEL

- + Keeps cohorts below the recommended 120
- + Allows students to take the courses they requested and stay on the graduation pathway selected
- + Staggers entry, breaks, lunch, and dismissal to ensure minimal contact
- + No more than 60% of the school will be in session for lunch on any given day
- + Provides teachers with time to attend to truly blended learning with in-service time available
- + Provides maximum contact (100%) to our junior students who need this support the most
- + Has every student attending school every day
- + Can easily be adapted to changes in pandemic stages (i.e. face-to-face classes can be transitioned online)

* A cohort is a group of students and staff who remain together throughout a school term. Within the cohort minimized physical contact should be encouraged, but a two-metre physical distance does not need to be maintained.

For more information, please visit [SurreySchools.ca](https://www.surreyschools.ca)